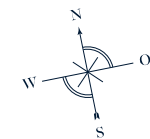
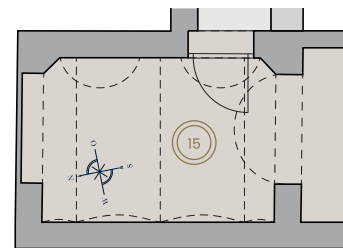
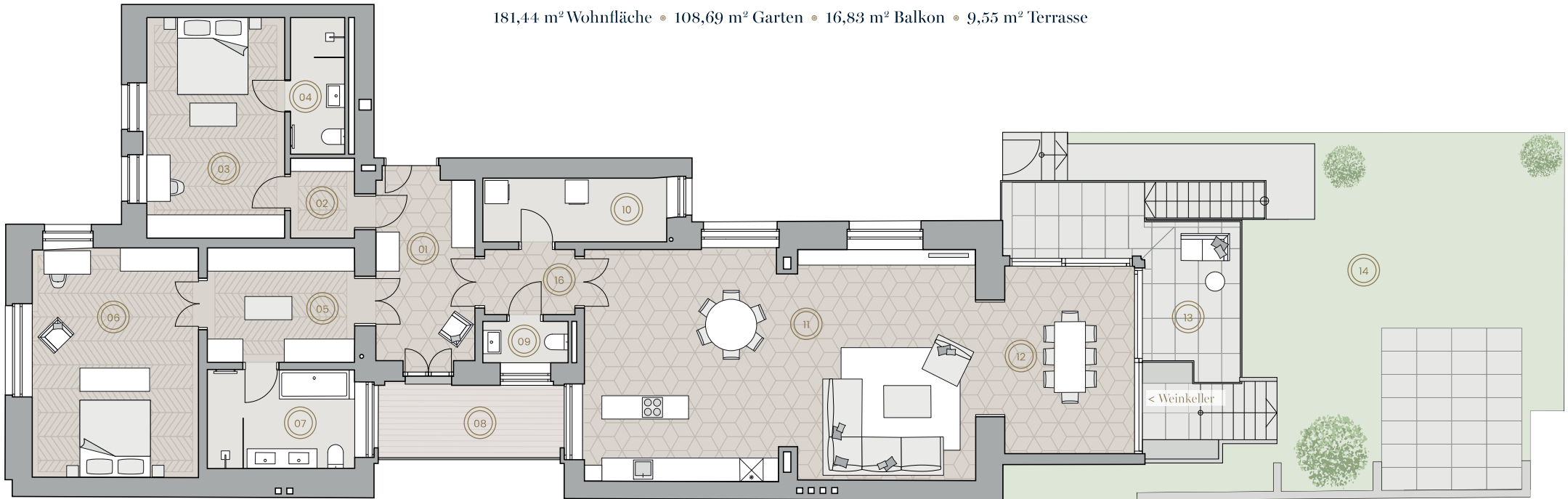


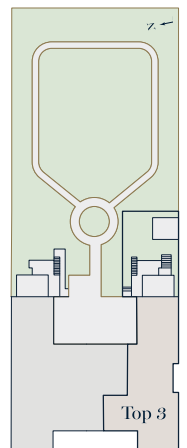
# Wattmannngasse 25 - Top 3

Parterre

181,44 m<sup>2</sup> Wohnfläche • 108,69 m<sup>2</sup> Garten • 16,83 m<sup>2</sup> Balkon • 9,55 m<sup>2</sup> Terrasse



A3 | M 1:100



## Eckdaten

|    |                                  |    |                                      |    |   |    |                                 |
|----|----------------------------------|----|--------------------------------------|----|---|----|---------------------------------|
| 01 | Vorraum: 12,59 m <sup>2</sup>    | 05 | Schrankraum: 11,15 m <sup>2</sup>    | 09 | WC: 2,33 m <sup>2</sup>                 | 13 | Balkon: 16,83 m <sup>2</sup>    |
| 02 | Schrankraum: 3,40 m <sup>2</sup> | 06 | Master Bedroom: 26,10 m <sup>2</sup> | 10 | Hauwirtschaftsraum: 7,76 m <sup>2</sup> | 14 | Garten: 108,69 m <sup>2</sup>   |
| 03 | Zimmer: 20,17 m <sup>2</sup>     | 07 | Master-Bad: 9,57 m <sup>2</sup>      | 11 | Wohn-/Essküche: 60,67 m <sup>2</sup>    | 15 | Weinkeller 12,67 m <sup>2</sup> |
| 04 | Bad: 4,93 m <sup>2</sup>         | 08 | Terrasse: 9,55 m <sup>2</sup>        | 12 | Wintergarten: 18,47 m <sup>2</sup>      | 16 | Gang: 4,30 m <sup>2</sup>       |